

Tringa Linear VET



Great things come in small packages

ESAOTE Pie Medical
THE IMAGE OF INNOVATION™

Handheld Diagnostic Power



The Tringa Linear is the newest member to Esaote-Pie Medical's Tringa Family of ultrasound systems. Weighing just 800 grams (< 2 lbs.), the Tringa Linear is small in size, but big in functionality and features. The Tringa Linear was specifically engineered for all aspects of reproductive imaging in bovine and equine, as well as for basic equine tendon imaging.

The unique design allows the system to be worn on the forearm or in a special carrying case around the neck or shoulder, and the external freeze switch adds to the Tringa Linear's ease-of-use in the field. The days of

twisting and turning in an attempt to probe the animal, reach the scanner's controls and actually see the screen are over.





Specifications

Ultrasound Scanning

- Linear array
- Fully digital conversion

Display

- 5" high-resolution VGA LCD
- 256 gray levels

Weight (basic unit)

- 0.8 kg

Probe

- Multi-frequency linear array endorectal (from high resolution to high penetration)

Image Modes

- B-Mode
- B/B-Mode
- B/M-Mode
- M-Mode
- B-zoom

Calculation Packages

- Fetal age tables with report pages (bovine, equine, swine, sheep, llama)
- Animal Science with report pages (hide-fat-loin thickness)
- Tendon measurements with report pages (equine)

Text Annotation

- Patient identification
- User/clinic name

Measurements

- Distance
- Length
- Area and Circumference
- Ellipse
- Angle
- Time
- Velocity
- Heart rate

Image Memory

- Built-in memory card stores up to 320 images

Connectivity

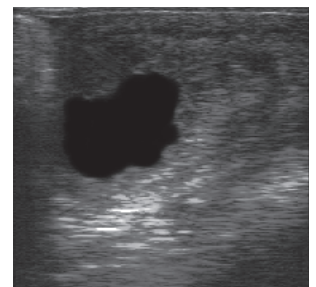
- Bidirectional infrared port for optional PC communication package
- Standard video out

Standard Accessories

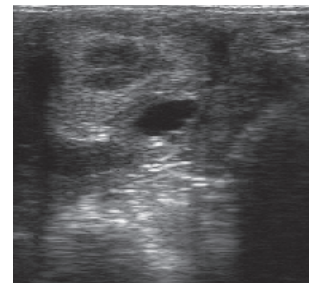
- Storage case
- 12 VDC fast-charge battery & charger
- Mounting glove
- Gel

Optional Accessories

- Carrying case
- External freeze & image save switch
- Probe holder
- Probe hand grip
- Additional batteries



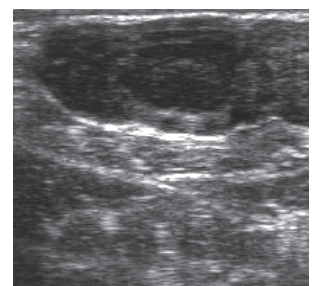
Equine pregnancy



Equine ovary, recent ovulation



Bovine uterus



Bovine ovary with CL



Tringa Linear **VET**



ISO 13485: 1996

ISO 9001: 2000

0344

ESAOTE S.p.A.

Headquarters: Via Siffredi, 58 16153 Genova, ITALY, Phone +39-010-6547.1, Fax +39-010-6547.275

International Activities: Via di Caciolle, 15 50127 Firenze, ITALY, Phone +39-055-4229.1, Fax +39-055-4229.208. E-mail: international.sales@esaote.com

International Veterinary Division: Pie Medical Equipment, P.O. Box 1132, 6201 BC Maastricht, The Netherlands. E-mail: vet@pie.nl

www.esaote-piemedical.com

France	Germany	Italy	The Netherlands	Spain	Russian Federation and CIS	USA	China
ESAOTE	ESAOTE BIOMEDICA	MEDMARK S.r.l.	PIE MEDICAL Benelux B.V.	ESAOTE	and CIS	BIOSOUND ESAOTE Inc.	ESAOTE CHINA Ltd
France S.A.R.L.	Deutschland GmbH	Via C. Colombo 49	P.O. Box 1132	ESPAÑA S.A.	ESAOTE S.p.A.	8000 Castleway Drive	Unit 1903-5, 19/F COSCO Tower
109, Av. Gabriel Péri	Hanns-Braun-Straße 50	20090 Trezzano S.N. (MI)	6201 BC Maastricht	Avda San Sebastian, s/n	Representative Office	P.O. Box 50858	Grand Millennium Plaza
94170 Le Perreux, Paris	85375 Neufahrn bei Freising	Italy	The Netherlands	08960 Sant Just Desvern	Khlebniy per., 27	Indianapolis	No. 181-183 Queen's Road Central
Phone +33-1-4871.2525	Phone +49 180 5372683	Phone +39-02-48463147	Phone +31-43-3824650	Barcelona Spain	121069 Moscow, Russia	Indiana 46250	Hong Kong
Fax +33-1-4871.3630	Fax +49 8165 61820	Fax +39-02-4459032	Fax +31-43-3824651	Phone +34 93 473 2090	Phone +7-095-232.18.33	Phone +1-317-813.6000	Phone +852-2545.8386
E-mail:esaote.france@wanadoo.fr	E-mail: esaote@esaote.de	E-mail: medmark@esaote.com	E-mail: benelux@pie.nl	Fax +34 93 473 2042	Fax +7-095-232.02.05	Fax +1-317-813.6600	Fax +852-2543.3068
				E-mail: info@esaote.es	E-mail: esaotemoscov@mtu-net.ru	E-mail: biosound@biosound.com	E-mail: esaote@esaotechina.com